

Version 7.0

M4PERSONAL

Installation Guide

www.cad-schroer.com

All rights reserved. No part of this documentation may be reproduced in any manner (print, photocopy or other) without the written permission of CAD Schroer GmbH.

CAD Schroer GmbH has made its best effort to ensure that the information in this document is accurate and reliable, but cannot guarantee the accuracy, timeliness, reliability or completeness of any of the information contained herein. CAD Schroer GmbH will not make any warranty nor accept legal responsibility or liability of any kind for consequences resulting from errors or omissions.

Registered Products and Trademarks of CAD Schroer GmbH:
MEDUSA, STHENO, M4, i4

Products and Trademarks of CAD Schroer GmbH:
MEDUSA4, STHENO/PRO, MEDEA, MPDS, MPDS4, M4 ISO, M4 P&ID FX

Products and Trademarks of the Parametric Technology Corporation or its subsidiaries in the USA and other countries:
PTC, PTC Creo, Pro/ENGINEER, Pro/DETAIL, Windchill PDMLink, PTC Mathcad und Pro/TOOLKIT.

All other brand or product names are trademarks or registered trademarks of their respective owners.

October 2020

Copyright © CAD Schroer GmbH

Germany

CAD Schroer GmbH
Fritz-Peters-Str. 11
47447 Moers

Tel. +49 2841 91 84 - 0
Fax +49 2841 91 84 - 44
e-mail: info@cad-schroer.de
www.cad-schroer.de

INSTALLATION

- Introduction 4
- Supported Configurations 5
- Installing M4 PERSONAL 6

Introduction

Please read this guide before you install your M4 PERSONAL software - it includes important information on the correct installation of the product.

Before you start the installation, please close all applications.

The CSG Installation Wizard will guide you through the setup process. If errors occur during installation, these are reported in the file *log.txt* in the installation path.

Supported Configurations

Please note: The system requirements for the Personal version differ from the professional version.

Operating System	Windows 10, 64 Bit
Recommended Memory	4 GB and higher
Disk	1,5 GB free space
Monitor Resolution	1400 x 900 1920 x1080 recommended
Mouse	3-Button Mouse

Displaying the Documentation

Supported PDF Reader

Adobe Systems Incorporated	Adobe Reader® DC Adobe® Acrobat® Pro DC
----------------------------	--

Supported Web-Browsers

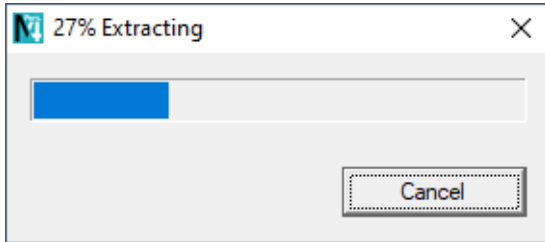
Microsoft Corporation	Microsoft Edge® (based on Chromium)
Microsoft Corporation	Internet Explorer® ¹⁾
Mozilla Foundation	Firefox®
Google Inc.	Google Chrome™

¹⁾ with a suitable PDF Plugin

Installing M4 PERSONAL

For the installation you need Administration rights.

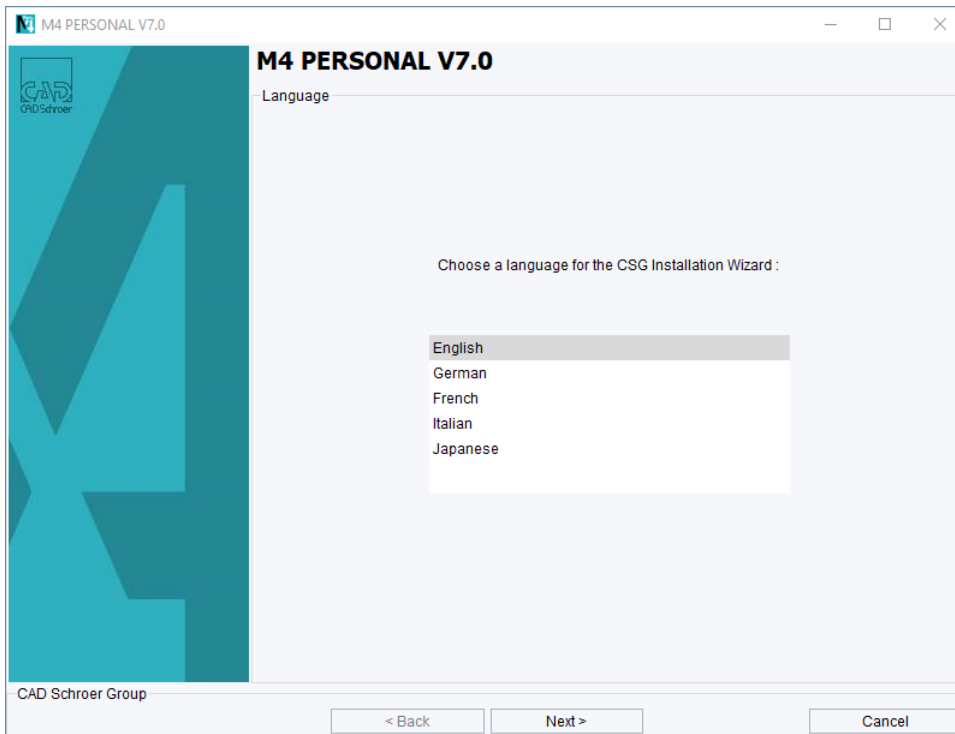
After having started *m4_personal_700_windows_x64.exe* the first window shows that the installation files are extracted into a temporary directory.



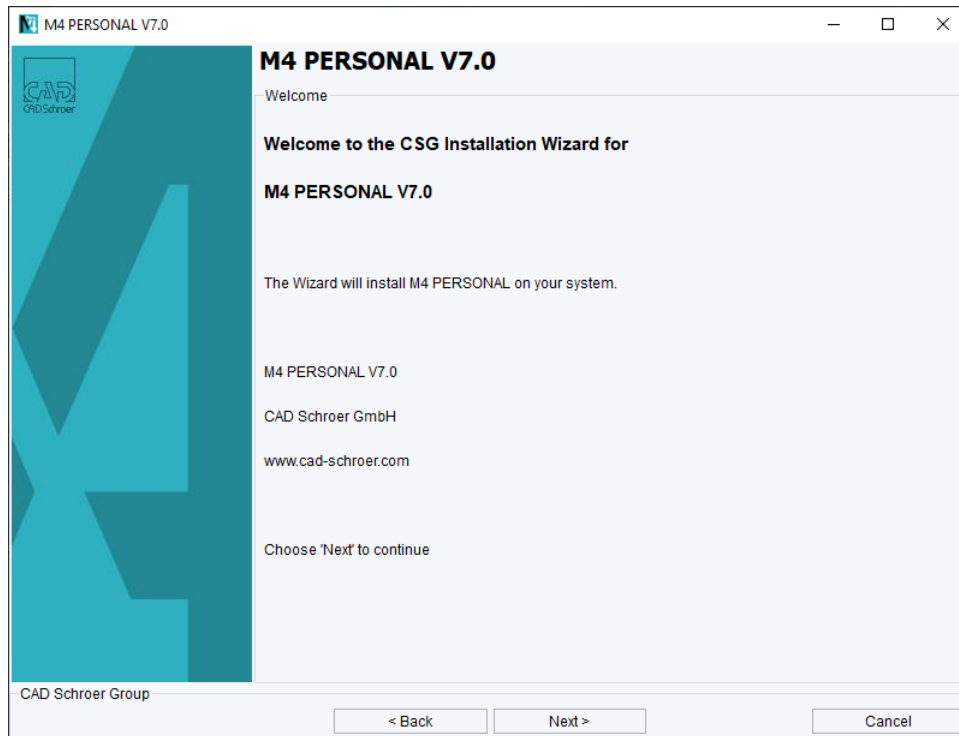
Having extracted the installation files, the Installation Wizard will be started.

Installation Wizard

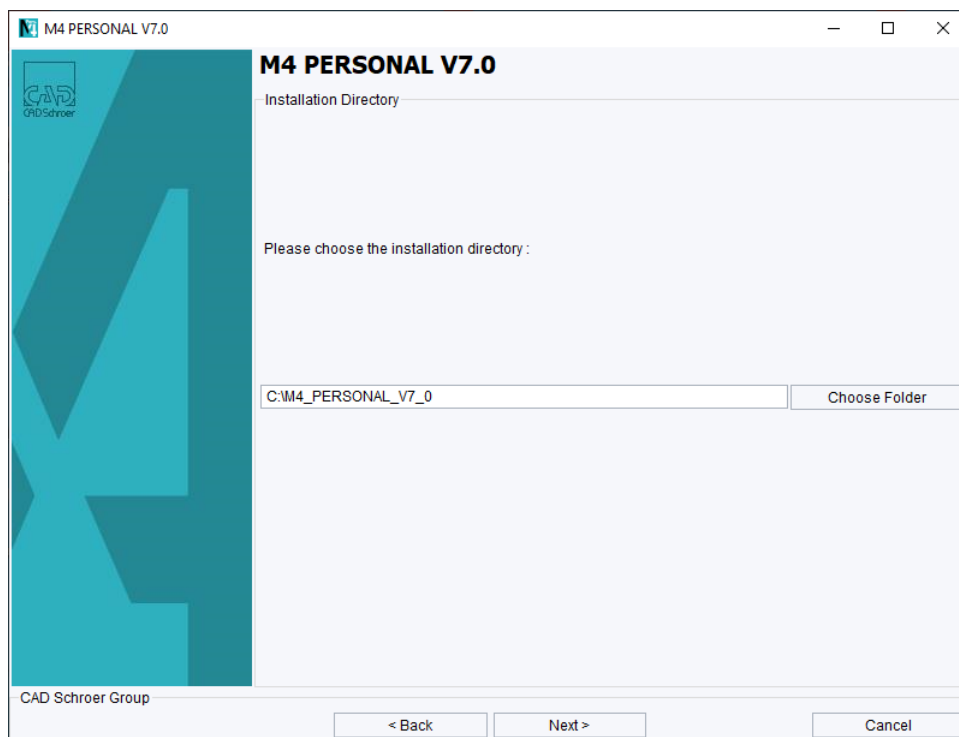
In the first window of the Installation Wizard choose the language for the Installation Wizard. The actual M4 PERSONAL product language can be chosen in a later step.



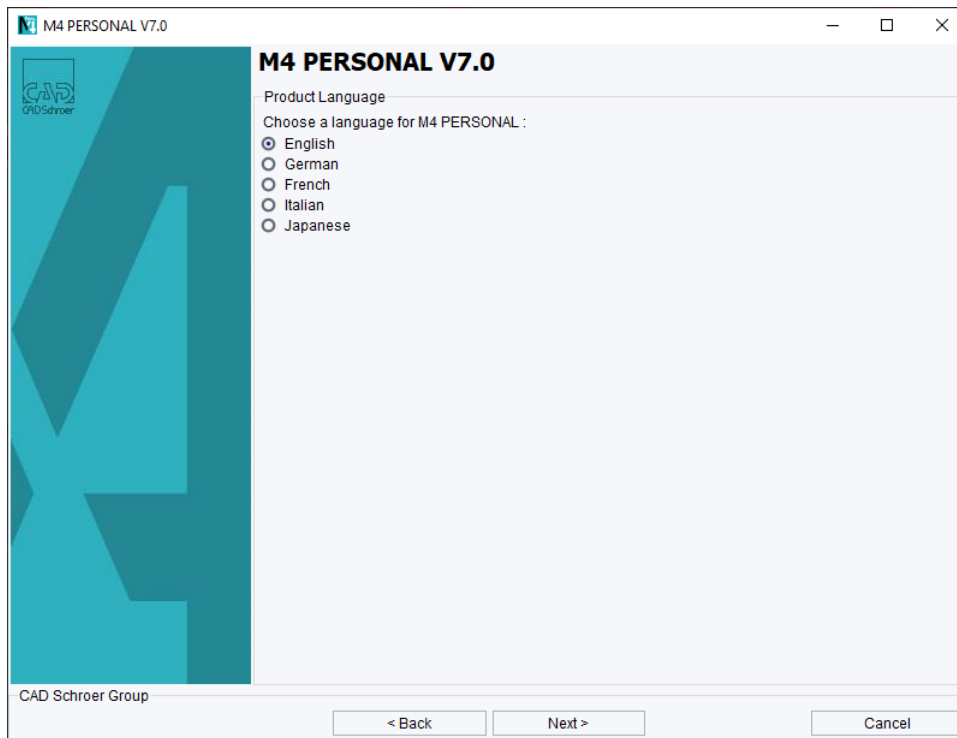
Click Next in the welcome screen.



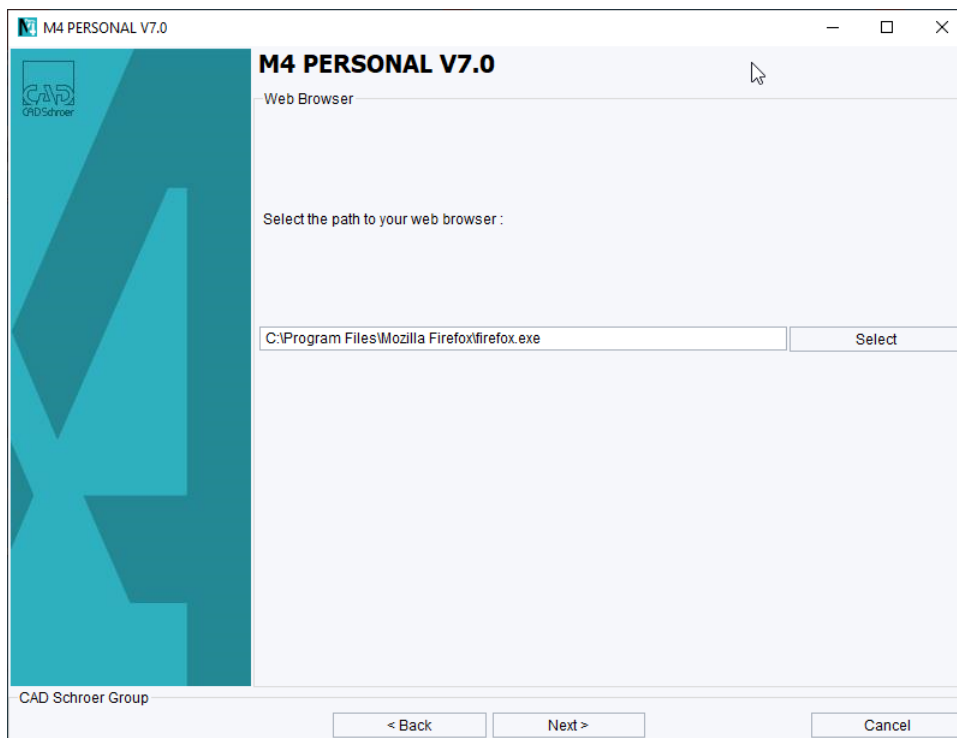
Choose the M4 PERSONAL installation folder. Please ensure that the path name contains no spaces. The installation path may not be *C:\Program Files\M4 PERSONAL_V7_0*, for example.



Choose the M4 PERSONAL software language.

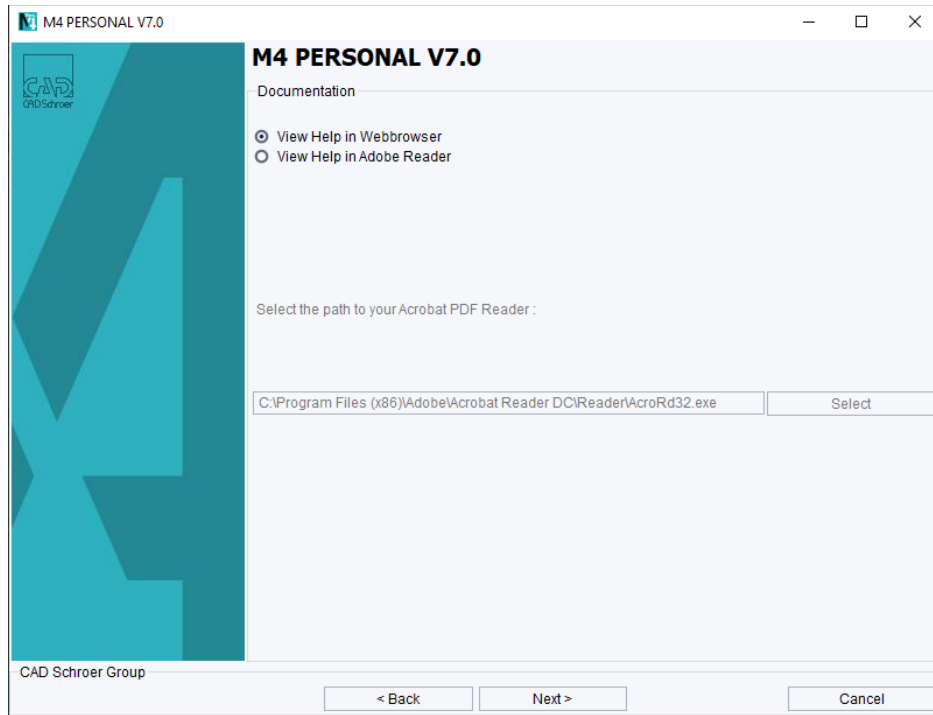


Select the path of your Web browser.

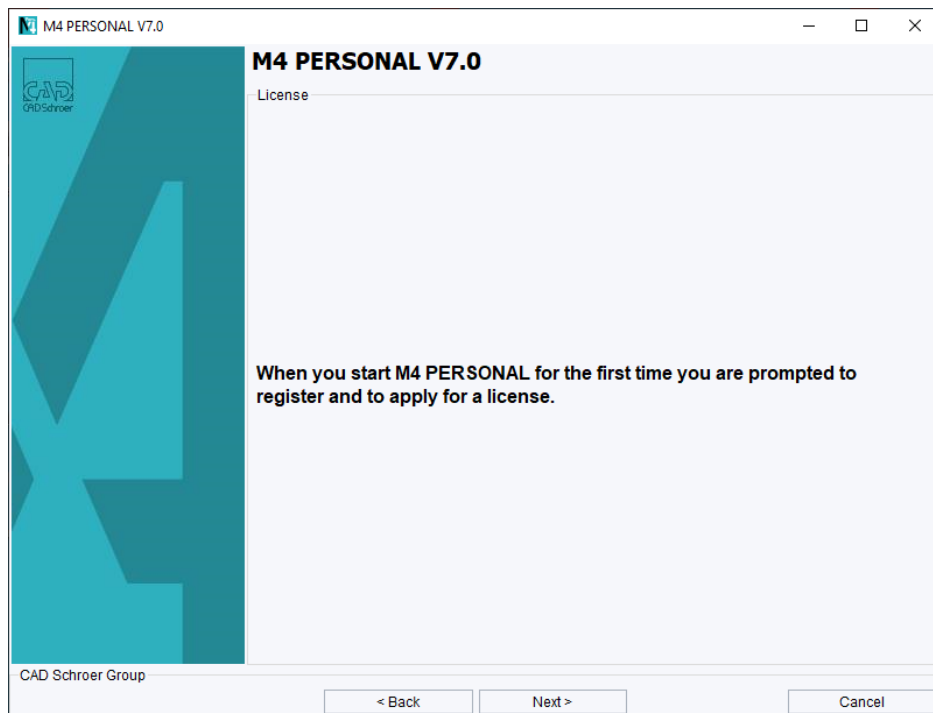


The documentation can be viewed either in a web browser or the Adobe Reader®. Default setting is the web browser.

Choose the desired viewer.



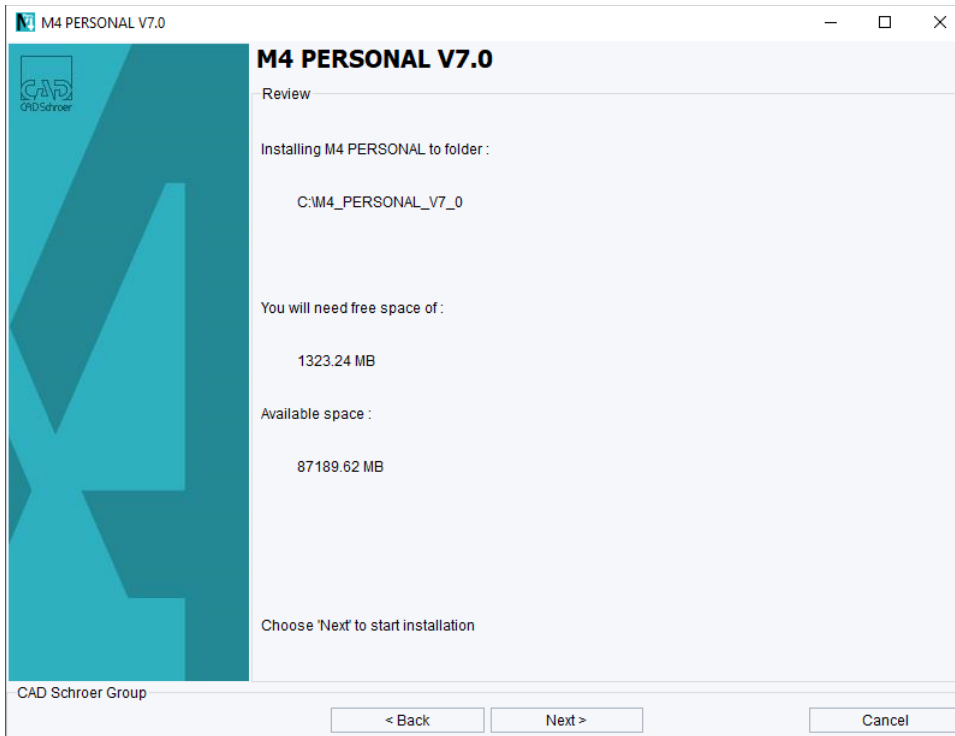
The next window gives a hint on registration and the license.



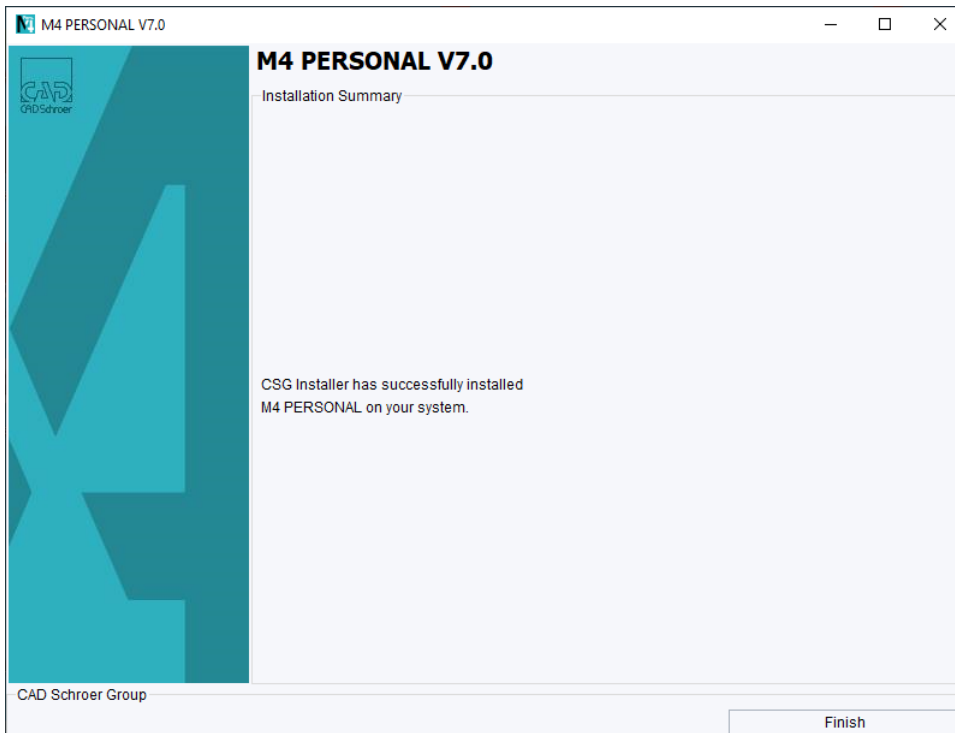
M4 PERSONAL 7.0 Installation



The next screen summarizes the features to be installed. Click on **Next** to start the installation process. After the installation the Master Project is created.



When the installation was successful, the following message is displayed. Click on **Finish** to close the Installation Wizard.



Please note: An active Internet connection is required for the following.

A registration window is displayed when you start the application for the first time.

M4 PERSONAL
✕

M4PERSONAL

**You need to register first to use this software in free mode.
Please fill in the form and get your free license.**

First name*

Last name*

Company

Street

City*

Country United States

E-Mail*

E-Mail Confirmation*

Phone

HostID

Note: fields marked with an asterisk (*) must be completed

Yes, I would like to receive **support e-mails**, plus a tips & tricks newsletter.

By choosing this option you will receive support e-mails. The emails will include video tutorials, helpful tips and documentation. In addition, you will receive our newsletter, which will provide you with further software tips and tricks.

For your security, we use a double opt-in procedure for support e-mail registration. For this reason you will shortly receive an e-mail containing a confirmation link for your e-mail address.

Information on data processing, the registration procedure, the dispatch, statistical evaluation and options for cancelling your subscription can be found in our [data protection declaration](#). Each support email and newsletter we send will also contain a de-registration link.

License Agreement

Licensing terms for MEDUSA4 Personal

In order to use the free MEDUSA4 Personal software, you will need a license and a license file (keyfile). The license file is automatically created when you fill in and send off the request form/web form.

After checking the details in the request form/web form, CAD Schroer GmbH, Fritz-Peters-Str. 11, 47447 Moers (hereinafter referred to as "CSG") shall grant the user a personal, non-exclusive, non-transferable and temporary usage license for the MEDUSA4 Personal software. Title, ownership rights and intellectual property rights for the software shall not be transferred to the user. Use of the license shall be restricted to the system environment specified in the request form/web form and to the computer workstation designated therein.

Once the validity of the temporary usage license expires, the user may request from CSG a new license file. Although in most cases this shall be issued, CSG explicitly reserves the right not to issue a new license file. If no new license file is issued, the user must uninstall the software and destroy all copies thereof.

The MEDUSA4 Personal software may be used for private, non-commercial purposes only. This shall also apply to educational institutions such as schools or universities. Work results (e.g. drawings) are automatically given a watermark when they are printed out. The use of the software for demonstration or training, if this is for commercial purposes, constitutes commercial use and is thus explicitly prohibited. The use of individual work results (drawings) for commercial purposes is only possible upon payment of a fee. The following portal is available for this purpose: <http://eservices.cad-schroer.de>.

CSG shall only be liable for intent and gross negligence. No further claims for compensation shall be admissible.

CSG shall only be liable for material and legal defects in the MEDUSA4 Personal software if CSG has fraudulently concealed from the user a material and/or legal defect in the MEDUSA4 Personal software. CSG shall accept no further liability and shall not provide a guarantee that the MEDUSA4 Personal software is free from material and legal defects.

It is not possible to conclude a maintenance contract for the free MEDUSA4 Personal software.

The current general licensing terms of CAD Schroer GmbH, excluding Clause I. p. 5, Clause V., Clause IX. p. 3, Clause XI., Clause XII. p. 3 and 4, Clause XIII. and Clause XIV., as well as the General Terms and Conditions of Business of CAD Schroer GmbH which can be viewed at www.cad-schroer.de or requested directly from CSG shall otherwise apply to the use of the MEDUSA4 Personal software.

By pressing the "Send license request" button you agree to CAD Schroer's License Agreement, [License Agreement - Terms and Conditions](#) and [General Terms and Conditions of Sales, Delivery and Payment](#) and [Privacy Policy](#).

Status

**Only if you have already received a license file.

After filling in the registration form and sending the data, you automatically receive a license.

