



CAD Schroer

ENGINEERING PRODUCTIVITY

www.cad-schroer.com



Our Company

Growth and Continuity

Founded in 1986 as a provider of CAD-based engineering services to manufacturers, CAD Schroer Group (CSG) has grown and adapted, making the transition to value added reseller, and finally to worldwide systems developer.

Never forgetting our roots, we provide solutions geared towards the needs of mechanical, plant and factory designers. Our software can flexibly adapt to your engineering processes, as well as to your systems architecture and PLM strategy. We can customise our solutions, develop client-specific functionality, or fully automate your recurring design processes.

Flexibility describes our software, as well as our support and consultancy services. We pride ourselves on reacting quickly to each individual's requirements. Because we tackle engineering challenges from an engineer's perspective, we have won the trust and loyalty of customers from around the globe - a trust that has become the foundation of our success, and the launch pad for further business growth.

Bespoke Solutions

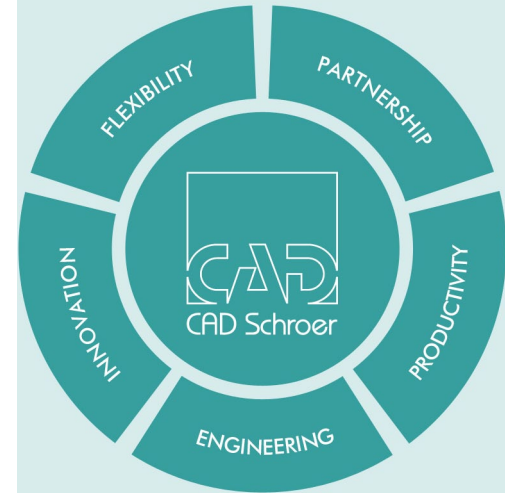
CAD Schroer's R & D centres draw on decades of expertise in the area of complex and graphical software development.

We often provide custom solutions for clients with particular requirements, whether this means developing customisations to fully automate repetitive design tasks, or interfaces to ensure that systems can talk to each other and data flows freely while being managed consistently. We can also develop entirely new applications to serve specific needs.

A Global Network

CSG offers bespoke advice and customisation services - from comprehensive, fully managed projects, to lending a guiding hand to your own development team.

Through our global network of branch offices and resellers we can offer local support to companies with internationally distributed teams.



Technical Support and Maintenance

CAD Schroer offers technical support and maintenance packages not only for the standard products on its price list, but also for any customisations or applications developed for you as part of our service offering.

We offer a support hotline, a customer portal, as well as personal support, delivered by extremely experienced software engineers, who work closely with customers worldwide.

CAD Training

Comprehensive training is the key to gaining a quick return on your software investment, allowing users to increase the speed and the breadth of the design process.

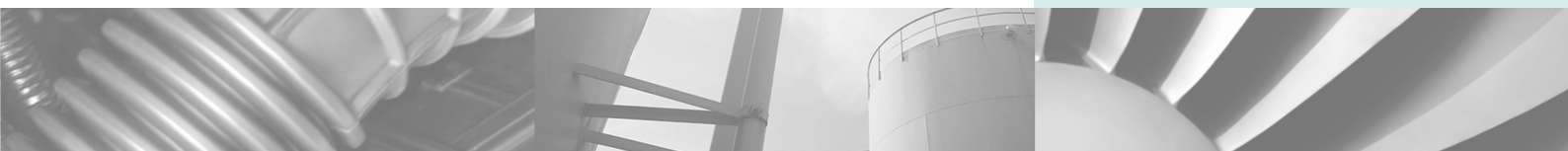
We can get your staff up to speed quickly by offering standard courses on-site, or at our local training facilities.

We also offer personalised hands-on workshops, and individual support in your design office.

Product Innovation

"CAD Schroer's software is a key project enabler. We have benefited immensely from CAD Schroer's dedication to product innovation, and the unremitting personal commitment of its team of technical consultants."

Richard Schilliger, responsible for PLM strategy at Burckhardt Compression





Our Products

Meeting and Beating Your Expectations

CAD Schroer's products combine ease of use with extreme flexibility. Powerful customisation tools and advanced parametric functionality can completely automate many design processes. Our products' open architecture allows clients to create their own customisations, in order to ensure adherence to specific corporate standards, for example. The software can be easily extended with customer-specific functionality, or adapted to a company's unique design processes.

From expert drafting to 3D modelling, from large-scale 3D layouts of entire process plants to the design of factories ...CAD Schroer's solutions provide an integrated, productivity-enhancing environment, which allows engineers to work efficiently and creatively with maximum flexibility.

Customer requirements and client feedback play an important role in our product development strategy, and we collaborate closely with universities in order to incorporate the latest research and technology into our software development plans.



Innovative Software Solutions

Our flagship product, MEDUSA4 (now in its fourth generation) continues to set the standard for 2D/3D mechanical CAD and design process automation.

MPDS4 is our powerful system for 3D plant engineering and 2D to 3D factory layout. This database-driven software offers high quality, large-scale 3D layout tools, with integrated interference and consistency checkers. Its modules cover all the main engineering disciplines, providing extensive libraries of standard catalog components.

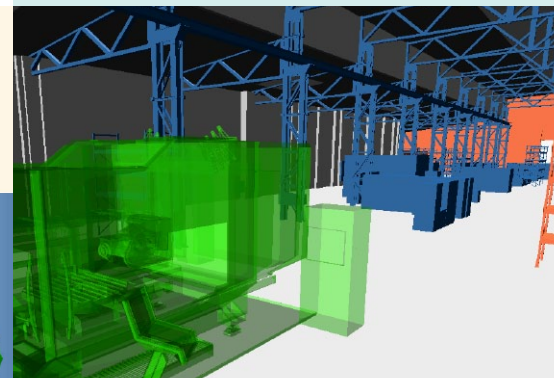
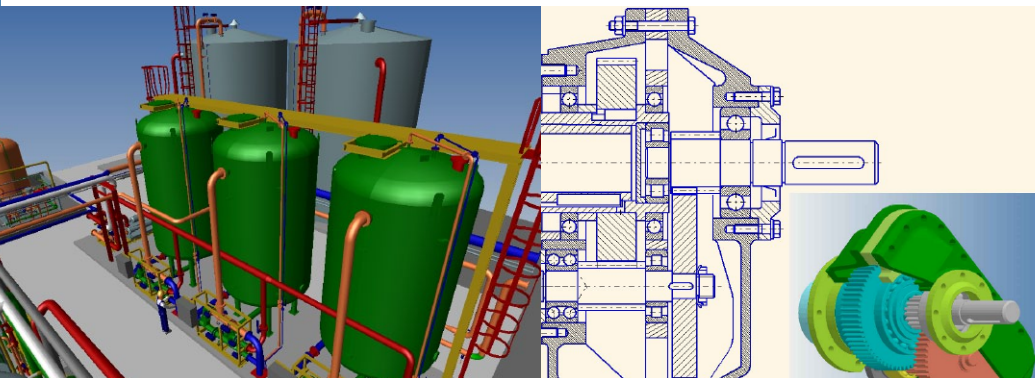
STHENO/PRO is a versatile drafting system designed specifically to support our customers' Creo Parametric® (formerly Pro/ENGINEER®) strategy, offering tight integration with Pro/INTRALINK® and Windchill® PDMLink™.

CAD Schroer also develops efficient data management software, as well as customer-specific solutions.

MPDS4

"No other plant design product can meet our demands like MPDS4. Its reliability, flexibility, speed, ease of use, compatibility with third party systems, and ability to deliver data for our downstream QA and financial control processes is a huge benefit to our business."

Mike Lyon, Project Director,
Christ Kennicott Water Technology Ltd



Flexibility and Design Automation

CAD Schroer's solutions have been developed with flexibility in mind.

Our products' customisability means that any repetitive design and data management tasks requiring a consistent set of input variables can be automated, saving immense amounts of time, cutting errors, guaranteeing consistency, and improving quality.

Our engineers understand engineering processes, and can quickly pinpoint opportunities for design automation - often a relatively small customisation can

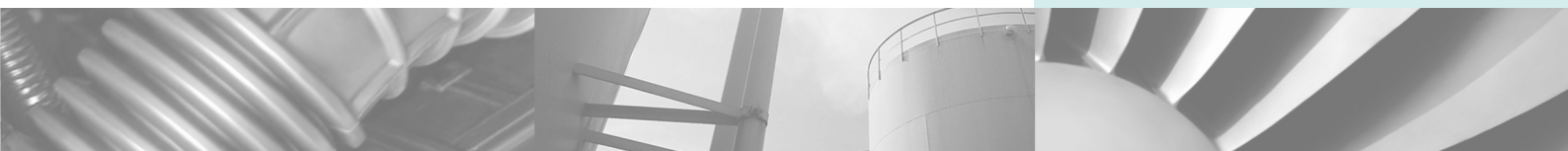
reduce design times from days or hours to minutes.

The initial outlay for software development services to achieve automatic design production is quickly recouped by the productivity gains, which cut pre-sales, as well as manufacturing and project lead times.

MEDUSA4

"The move to MEDUSA4 was a great leap forward for Sulzer Pumps. The comprehensive design automation package, modern user interface, and a huge raft of productivity tools provide us with the efficiency and flexibility we need to meet new challenges and develop world class pumping solutions."

Hansjörg Büchler, Chief Information Officer,
Sulzer Pumps Worldwide



"The most exciting thing about software is the future"

Our Services

Helping You Meet Your Challenges

As demands on quality and budgets grow, many companies are making a conscious effort to refocus on their core competencies, working in partnership with other experts to obtain the skills they need to benefit from the increasing speed of innovation. This is especially true in the IT and software consultancy arena, where CAD Schroer can offer decades of experience and extensive expertise. Our engineers aim to react quickly and competently to fulfil and professionally implement your requirements.

Whether you need to choose the best off-the-shelf solution, adapt existing systems, or develop future-proof custom programs to suit your unique requirements, CAD Schroer's experts can help. We will support you with professional advice, individual solutions, personal support, and comprehensive training.

We'll be there from the initial idea through the planning and implementation stages, while our maintenance and support services will keep your engineering software up-to-date and optimised.



CAD Schroer Worldwide

Our corporate headquarters are located in Moers, Germany, only 20 minutes from Düsseldorf airport.

CAD Schroer has offices and subsidiaries throughout Europe and in the United States.

Our software product development teams are based in Germany and at our R&D centre in Cambridge, UK.

Our Customers

Our customers work in areas such as plant and installation design; construction engineering and manufacturing; the automotive sector and its supply chain, and public and private sector utilities. They operate in 39 countries across the globe, with over 25,000 installed licences.

Customer care, support and technical excellence have always been at the top of our agenda.

Teamwork

“In our project teamwork with CAD Schroer we focused on proven design processes, coupled with innovative new ideas. I could immediately see the benefits of the new ideas CAD Schroer presented. It was a very pleasant and transparent way of working - tackling and solving issues together.”

Dragan Ćirić, CAD Engineer,
KLAUS UNION



Strong Partnerships

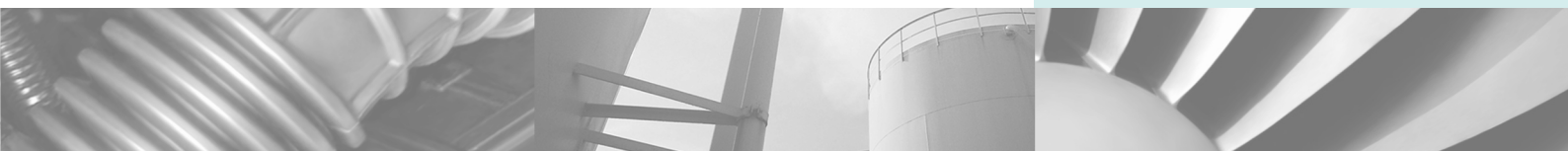
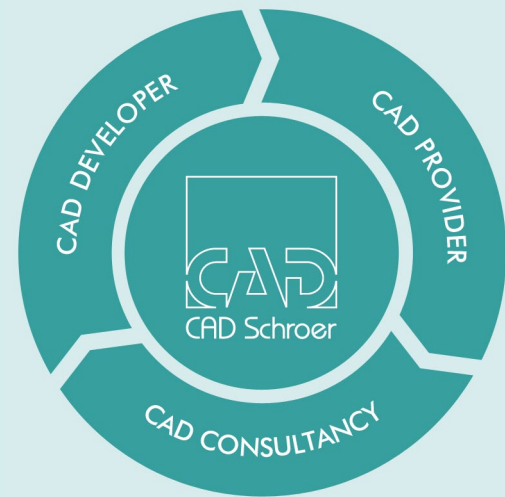
CAD Schroer is your ideal partner for engineering software services. We make real world suggestions that take into consideration your long-term goals, your technology and business strategy, your existing systems, and your budget constraints. We are proud of our long-term partnerships, and continue to work hard to retain our customers' loyalty.

Our clients know us as approachable and personable, skilled and professional, dedicated and committed.

High Standards

Our support staff consists of extremely experienced software engineers, who work closely with customers throughout the world. We are quick to react and personally committed to meeting your individual needs and requirements.

Our worldwide network of subsidiaries, branch offices and resellers is there to maintain the high standard of service our clients have come to expect, even in countries and regions without a direct presence.





Contact CAD Schroer

United States

CAD Schroer US, Inc.
34 Rand Place
Pittsford, NY 14534

Tel.: +1 866-724-7637

E-Mail: info@cad-schroer.com

Web: www.cad-schroer.com

United Kingdom

CAD Schroer UK Ltd
Sheraton House, Castle Park
Cambridge CB3 0AX

Tel.: +44 1223 850942

E-Mail: info@cad-schroer.com

Web: www.cad-schroer.com